

COMMAND
THE
FUTURE.



DRAGONFISH

A **Revolutionary**
eVTOL Fixed-Wing sUAS



ROBOTICS
autelrobotics.com



PIRAMIDE
TECNOLOGIAS

<http://www.piramidetec.com.br>

Dragonfish At a Glance



120 min

Flight Time



18.6 mi

Video Transmission Range



67 mph

Top Speed



4k 20X

Optical zoom

3 min

Quick assembly
2-min toolless assembly



5 sec

Boot and self-check



1-Tap

Take-off and landing & other
smart autonomous features



IP43

Weather resistance



ROBOTICS
autelrobotics.com



PIRAMIDE
TECNOLOGIAS

<http://www.piramidetec.com.br>

Why VTOL?

Autel's VTOL Advantages

Multicopter	Traditional Fixed-wing	Dragonfish (VTOL)
Take-off & Land Anywhere ✓	Take-off & Land Anywhere ✗	Take-off & Land Anywhere ✓
Long Flight Time ✗	Long Flight Time ✓	Long Flight Time ✓
Easy to Fly ✓	Easy to Fly ✗	Easy to Fly ✓

Limitations of Traditional Fixed-Wing Aircrafts



Versatility in Flight

The Vertical Take-off or Landing (VTOL) capabilities of the Dragonfish give you more flight time than a quadcopter and more flexibility than a traditional fixed-wing.

Fixed-Wing

Traditional methods of take-off for fixed-winged aircraft have additional restrictions and require additional training. Fixed-winged systems may also require parachutes or a clearing to crashland.

Dragonfish (VTOL)

With the Dragonfish, no launchers, throwing, or runways are needed for take-off. Make any 10x10ft square your take-off and landing area.

Efficient Propulsion



Compact & Portable Aircraft
Lightweight and fits in the back of any SUV/crossover vehicle.



Universal Power Source
No specialized fuel source needed and next to no maintenance costs.

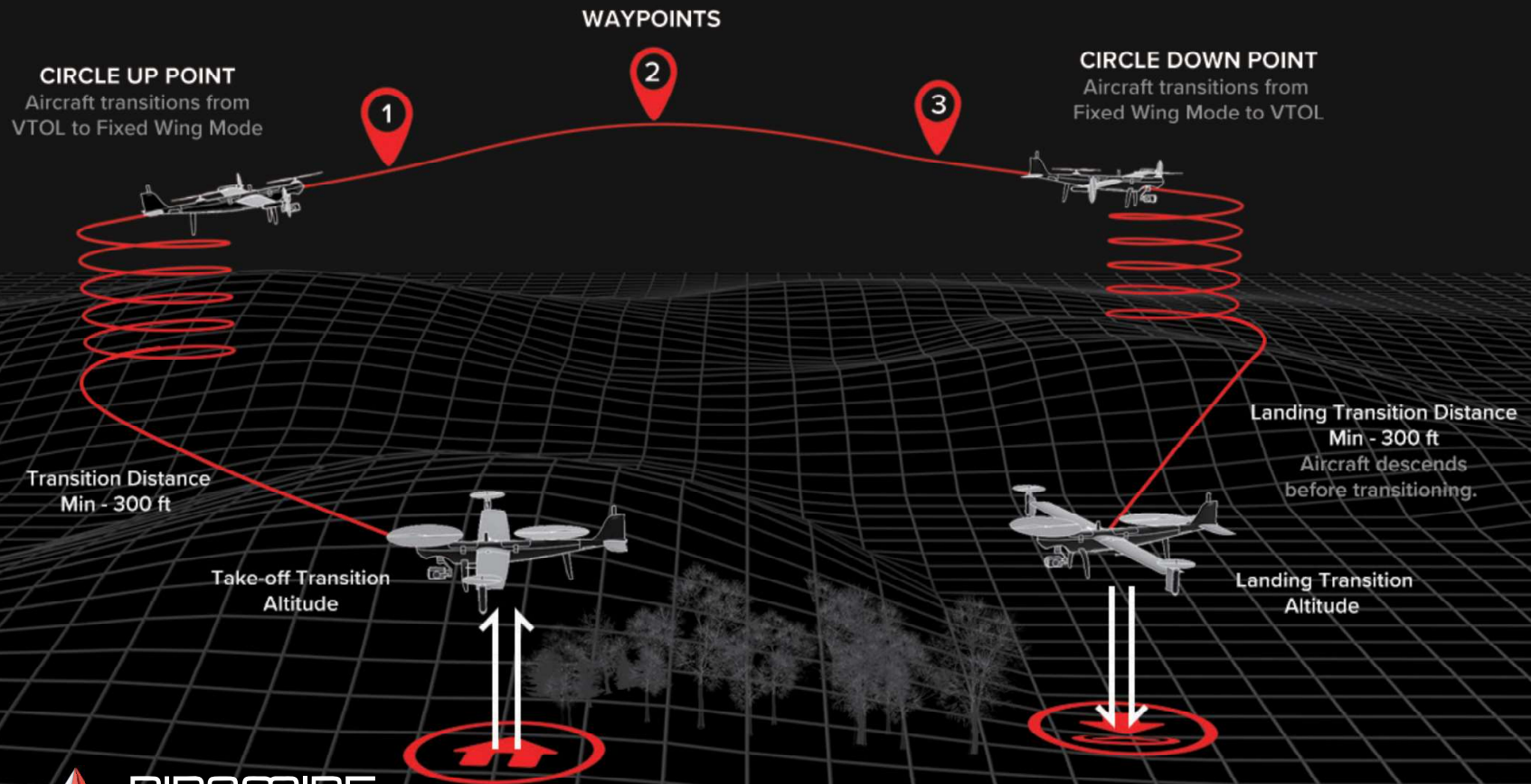


Near-Silent Operation
Dragonfish is inaudible above 300 ft AGL.



Designed for the Future
An eco-conscious and green aircraft.

Dragonfish Flight Logic



Compact, Portable, Precise



Ultra-Portable:

The Dragonfish's carrying case is lightweight and fits in the back of any SUV/Crossover.



Fast Deployment:

The Dragonfish can be assembled toolless in 2 minutes and is ready to fly in 5.



Class-Leading Flight Time:

120 minutes of flight time with payloads.



World-Class Telemetry:

30 km (18.6 miles) video transmission range* *with base station setup.



Wind Resistant:

Level 7 32-38 mile/hr winds * (* While transitioning, the wing resistance is level 6) .

Redundancy with **Safety in Mind**



Flight Control System:

Autel Robotics' superior flight control platform guarantees stability and reliability in every flight.



Weather-resistant:

IP43. Rugged construction featuring a carbon-fiber core and fiber-glass composite outer shell provides additional rigidity and durability.



Internal Communication:

Dual-redundant CAN bus communication protects the aircraft from electromagnetic interference.



Attentive AI:

Vigilant AI continuously self-checks the system to prevent accidents or faults before they occur.



Automatic Mode Switch:

Dragonfish will automatically transition to multi-rotor mode if fixed-winged mode becomes unstable.



Backup Modules:

The aircraft's battery, barometer, positioning system, compass, and IMU all have backup modules to ensure flight safety.



Terrain Follow:

The aircraft's altitude will adjust based on natural terrain & obstacles. Manually adjust safe altitude tolerance as well.



Self Geofencing:

Create your own no-fly zones and safe fly zones near restricted airspace.



ADS-B:

With ADS-B receiving, detect the presence of any manned aircraft nearby to avoid mid-air collisions



ROBOTICS

autelrobotics.com



PIRAMIDE
TECNOLOGIAS

<http://www.piramidetec.com.br>

Interchangeable Payload System



DG-Z2

4K 20x Optical Zoom
12 Megapixel Wide-Angle Camera
3-Axis Stabilized Gimbal System



DG-T3

4K 20x Optical Zoom
12 Megapixel Wide-Angle Camera
640x512 High-Resolution Infrared
3-Axis Stabilized Gimbal System



DG-T3H

12 Megapixel Wide-Angle Camera
1280x1024 High-Resolution Infrared
Laser Distance Measurement Radar
3-Axis Stabilized Gimbal System



DG M1

1 Visible Light Sensor (12 Megapixels)
6 Multispectral Sensors
3-Axis Stabilized Gimbal System



DG L20T

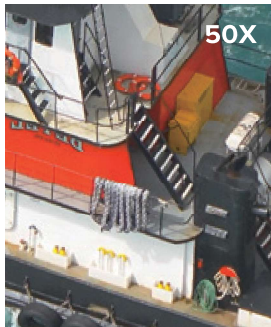
4K 20x Optical Zoom
12 Megapixel Wide-Angle Camera
640x512 High-Resolution Infrared
Laser Distance Measurement Radar
3-Axis Stabilized Gimbal System



Third-Party Payload SDK

Coming Soon

Sensor Capabilities



Wide-Angle:

Aids in situational awareness.



Laser Range Finder:

Allows Dragonfish to target lock with exact distance and coordinate measurements. (Range 2km/ 1.25 mi)



Thermal 640x512:

High-resolution thermal imaging allows Dragonfish to see subjects in difficult terrain or in low light situations.

Ground Control Station



Ultra-bright Display

9.7" 1000 nit display for daylight operation; twice as bright as a mobile device.



Long Battery Life

4.5 hours of battery life. Supports fast charging for multi-mission days.



Multi-port Output

Stream to 3rd party sources via the HDMI 2.1 output.



Data Encryption

Get reliable AES-256 bit encryption for data at rest and for data during transit.



Simple and Intuitive:

Large button layout makes it easy to operate, even while wearing gloves.



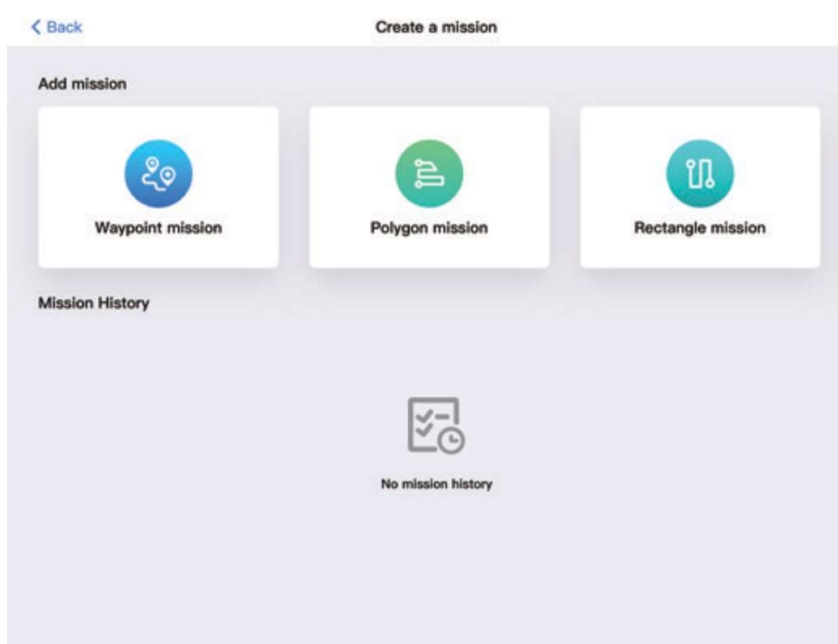
ROBOTICS
autelrobotics.com



PIRAMIDE
TECNOLOGIAS

<http://www.piramidetec.com.br>

Autel Voyager



All-in-one Mission Planning

Perform advanced waypoint, rectangular, and polygon missions from start to finish.

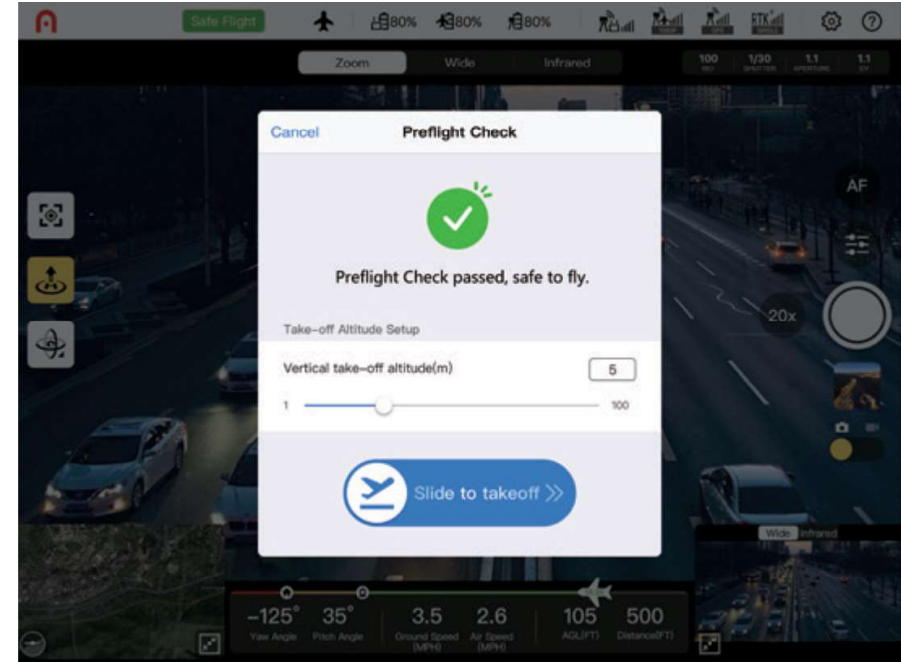
Quick Mission:

Create missions on the fly while the Dragonfish is in another mission. Create multiple missions within missions to suit changing situations.



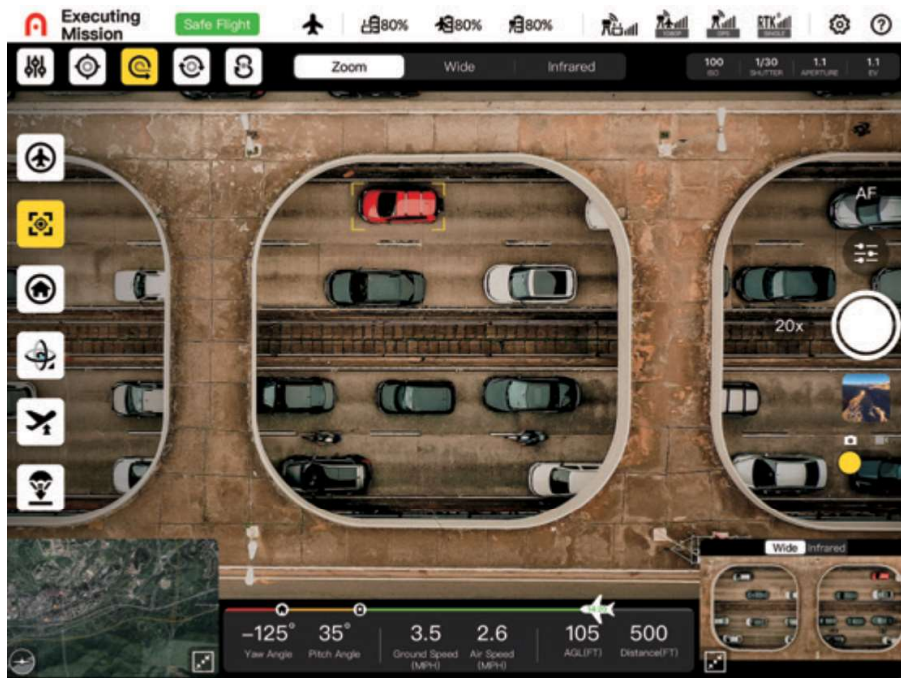
Manual Take Over:

The pilot can fly the drone manually at any point during a flight. The Dragonfish will automatically transition between fixed-wing and quadcopter mode depending on airspeed.



Easy 1-Tap Take-off and Landing:

Simply tap the screen and the Dragonfish will fly where you want it to go. Tap again to safely land the aircraft.



Advanced & Predictive Tracking:

Track subjects at speeds of up to 60 mph. Continue to track moving objects, even when the object temporarily leaves line of sight.



Object Recognition:

Dragonfish can recognize up to 64 objects and can identify distinct objects, such as humans, animals, and vehicles.

Practical Use Cases



Public Safety



Firefighting & Fire Prevention



Search & Rescue



Oil & Gas Corridor Inspection and Security



Traffic Monitoring & Management



Coastal Surveillance and Security



Border Patrol Security



Critical Infrastructure Protection



Disaster Relief

Technical Specifications

Size	90.55" x 50.78" x 18.1" / 2300 x 1290 x 460 mm
Endurance (with payload)	120 min
Aircraft Weight (w/o payload)	16.5 lbs (7.5 kg)
Maximum Payload	3.3 lbs (1.5 kg)
IP Rating	IP43
Transmission Range	18.6 miles (30 km)
Wind Resistance	Level 6
Maximum Height	19,685 ft (6000 m)
Flying Speed	0mph to 38mph (Multirotor); 38mph to 67mph (Cruise Mode) 0m/s~17m/s (Multirotor); 17m/s~30m/s (Cruise Mode)
Working Temperature	-4°F to 122°F (-20 to 50°C) 1 cm+1 ppm (Multirotor)
Position Accuracy	3 cm+1 ppm (Cruise Mode)
GNSS	GPS+GLONASS+Beidou+Galileo

COMMAND THE FUTURE.



AUTEL
ROBOTICS

autelrobotics.com

22522 29th Dr SE, Bothell,
Washington US

 **PIRAMIDE**
TECNOLOGIAS

<http://www.piramidetec.com.br>

Rua Des. Lauro Nogueira, 1500 SL 1013
Rio Mar Trade Center
60.175-055 - Fortaleza - CE
BRASIL



Assista Em Nosso Site!